

Anvil heads are designed to seat against the shapes and diameter sizes of the Sleeve heads of Blind Nuts and Blind Bolts. Each type of Anvil is designated by a letter. This Anvil letter designation is indicated on each of the Driving Tool tabulated ordering charts following and on the Selection Charts of Blind Nuts and Blind Bolts.

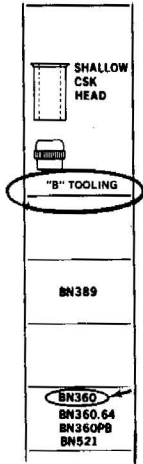
To order a set of Driving Tools, note the letter designating type of tooling on the top of each column on the Selection Charts. Examples of ordering

are noted below for tooling items required to install Blind Nuts and Blind Bolts.

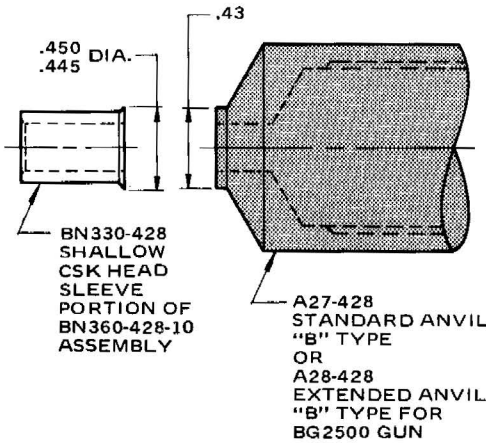
Mandrels are available in various lengths to accommodate several or more grip ranges of material thickness. Be sure to specify the correct grip range Mandrel to accommodate the required material thickness of the joint to be fastened.

Blind Nut Ordering Example: To order Driving Tools (Anvil, Chuck and Mandrel) for a BG2500 Gun to install a BN360-428-10 Blind Nut (for a 1/4-28 bolt, 10/16 or 5/8 grip length) into a material thickness of 5/8 inch, the Selection Chart indicates "B" type tooling. Turn to the driving tool ordering pages 22 and 24 and select one each of the standard or extended length tooling as follows:

- A27-428 Anvil ("B" Type, Standard)
- C2-12 Chuck
- M1-12 Mandrel (1/2" to 1" Grip)
- or
- A28-428 Anvil ("B" Type, Extended)
- C2-12 Chuck
- M3-12 Mandrel (1/2" to 1" Grip)

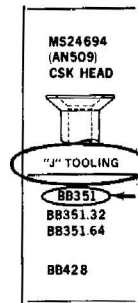


DETAIL OF BLIND NUT SELECTION CHART

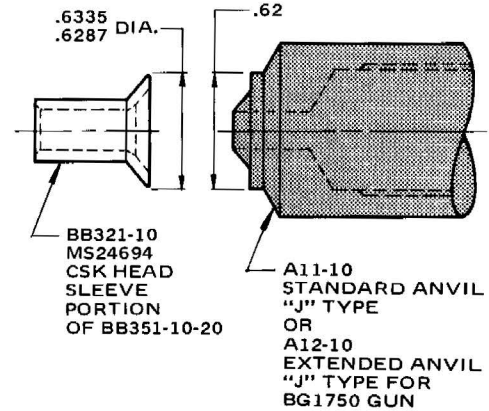


Blind Bolt Ordering Example: To order Driving Tools (Anvil, Chuck, Mandrel) for a BG1750 Gun and the Core Bolt Driver to install a BB351-10-20 (10/32 or 5/16 sleeve diameter, 20/16 or 1/4 grip length) into a material thickness of 1/4 inch, the Selection Chart indicates "J" type tooling. Turn to the tool ordering page 28 and select one each of the standard or extended length tooling as follows:

- A11-10 Anvil ("J" Type, Standard)
- C1-10 Chuck
- M2-10 Mandrel (1/2" to 1" Grip)
- HTS3 Core Bolt Driver (Hi-Torque)
- or
- A12-10 Anvil ("J" Type, Extended)
- C1-10 Chuck
- M4-10 Mandrel (1/2" to 1" Grip)
- HTS3 Core Bolt Driver (Hi-Torque)



DETAIL OF BLIND BOLT SELECTION CHART



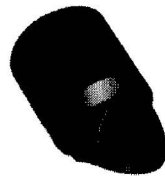
BLIND BOLT CORE BOLT DRIVERS

INSERT DRIVERS



PHILLIPS FREARSON

HI-TORQUE RECESS ONE-PIECE DRIVERS



HTS Series

HI-TORQUE RECESS 2-PIECE DRIVERS



HTA Series

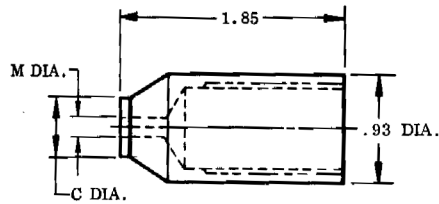


HT3000M Series

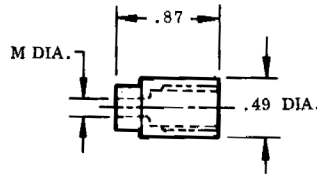
Blind Bolt First Dash No.	Core Bolt Recess Type	INSERT DRIVERS		1 PIECE DRIVERS		2 PIECE DRIVERS		
		1/4 Hex. Insert Bit Part Number	HTS SERIES		HTA SERIES		HT3000M SERIES	
			Square Drive Socket	Part Number	Square Drive Socket	Part Number	Square Drive Socket	Part Number
-5	Phillips #1 Frearson	440-1P 440-F1						
-6	Phillips #1 Frearson	400-1P 440-F1						
-8	Phillips #2 Frearson	440-2P 440-F1						
-10	Hi-Torque #3		1/4	HTS3	1/4	HTA3	1/4	HT3203M
-12	Hi-Torque #4		3/8	HTS4	3/8	HTA4	3/8	HT3304M
-14	Hi-Torque #5		3/8	HTS5	3/8	HTA5	3/8	HT3305M
-16	Hi-Torque #6		3/8	HTS6	3/8	HTA6	3/8 1/2	HT3306M HT3406M

These drivers are used with standard socket wrenches or torque wrenches to install core bolts into the installed portion (sleeve and expander) of Blind Bolts.

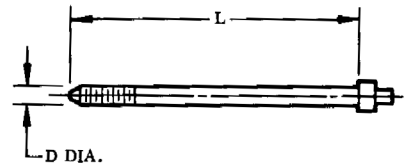
"A" STANDARD DASHED TOOLS (1 1/2" long Anvil) for use with BG1750 GUN.



ANVIL



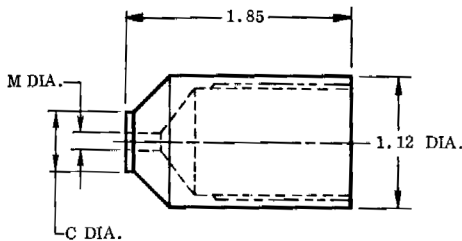
CHUCK



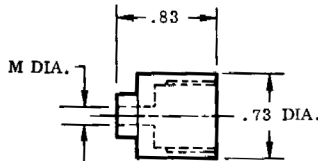
MANDREL

BLIND NUT FIRST DASH NO.	ANVIL ("A" Type)		CHUCK		MANDREL												
	TOOL NO. TO ORDER	C DIA.	M DIA.	TOOL NO. TO ORDER	M DIA.	MIN. GRIP—1/2" BLIND NUT GRIP RANGE			1/2"—1" BLIND NUT GRIP RANGE			1"—2" BLIND NUT GRIP RANGE			2"—3" BLIND NUT GRIP RANGE		
						TOOL NO. TO ORDER	D DIA.	L	TOOL NO. TO ORDER	D DIA.	L	TOOL NO. TO ORDER	D DIA.	L	TOOL NO. TO ORDER	D DIA.	L
-832	A15-832	.38	.166	C1-8	.166	M01-8	.164	2.00	M1-8	.164	2.50	M2-8	.164	3.50			
-1024	A15-1032	.46	.191	C1-1032	.191	M01-1024	.189	2.10	M1-1024	.189	2.60	M2-1024	.189	3.60	M3-1024	.189	4.60
-1032						M01-1032			M1-1032			M2-1032			M3-1032		

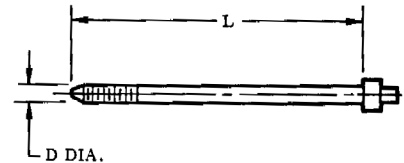
"A" STANDARD DASHED TOOLS (2" long Anvil) for use with BG2500 GUN



ANVIL



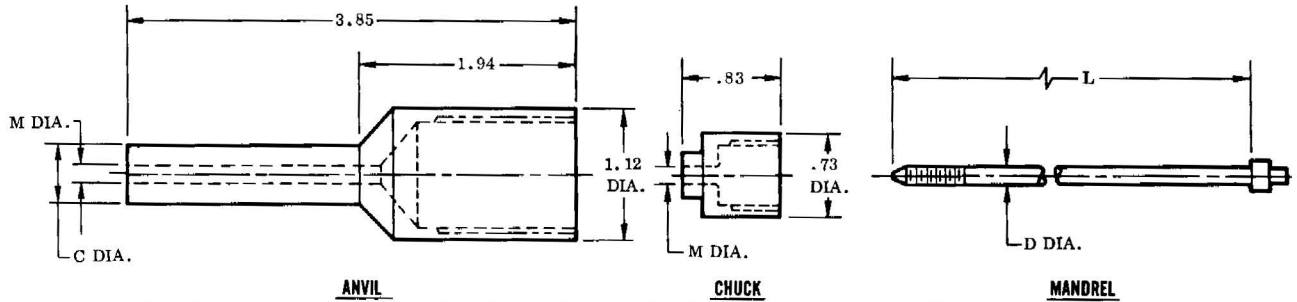
CHUCK



MANDREL

BLIND NUT FIRST DASH NO.	ANVIL ("A" Type)		CHUCK		MANDREL												
	TOOL NO. TO ORDER	C DIA.	M DIA.	TOOL NO. TO ORDER	M DIA.	MIN. GRIP—1/2" BLIND NUT GRIP RANGE			1/2"—1" BLIND NUT GRIP RANGE			1"—2" BLIND NUT GRIP RANGE			2"—3" BLIND NUT GRIP RANGE		
						TOOL NO. TO ORDER	D DIA.	L	TOOL NO. TO ORDER	D DIA.	L	TOOL NO. TO ORDER	D DIA.	L	TOOL NO. TO ORDER	D DIA.	L
-832	A25-832	.38	.166	C2-8	.166	M01-8	.164	2.00	M1-8	.164	2.50	M2-8	.164	3.50			
-1024	A25-1032	.46	.191	C2-1032	.191	M01-1024	.189	2.10	M1-1024	.189	2.60	M2-1024	.189	3.60	M3-1024	.189	4.60
-1032						M01-1032			M1-1032			M2-1032			M3-1032		
-420	A25-428	.54	.250	C2-12	.250	M01-420	.248	2.40	M1-420	.248	2.85	M2-420	.248	3.85	M3-420	.248	4.85
-428						M01-12			M1-12			M2-12			M3-12		
-518	A25-524	.65	.313	C2-14	.313	M01-518	.310	2.50	M1-518	.310	3.00	M2-518	.310	4.00	M3-518	.310	5.00
-524						M01-14			M1-14			M2-14			M3-14		
-616	A25-624	.74	.375	C2-16	.375	M01-616	.373	2.58	M1-616	.373	3.05	M2-616	.373	4.05	M3-616	.373	5.05
-624						M01-16			M1-16			M2-16			M3-16		

"A" EXTENDED DRIVING TOOLS (3.85 Anvil) for use with BG2500 GUN.



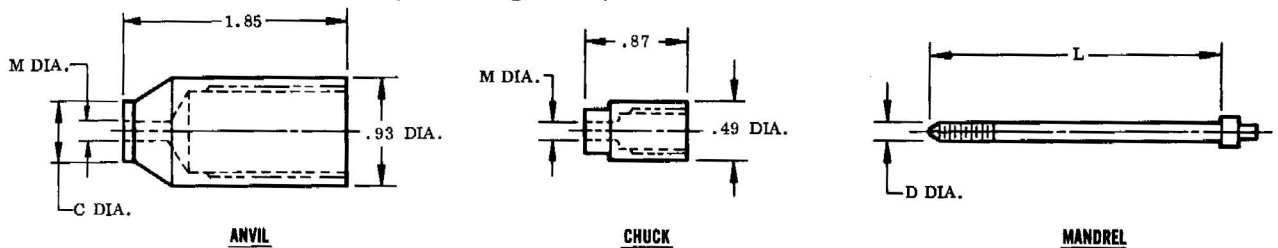
BLIND NUT FIRST DASH NO.	ANVIL ("A" Type)			CHUCK			MANDREL										
	TOOL NO. TO ORDER	C DIA.	M DIA.	TOOL NO. TO ORDER	M DIA.	MIN. GRIP-1/2" BLIND NUT GRIP RANGE			1/2"-1" BLIND NUT GRIP RANGE			1"-2" BLIND NUT GRIP RANGE			2"-3" BLIND NUT GRIP RANGE		
						TOOL NO. TO ORDER	D DIA.	L	TOOL NO. TO ORDER	D DIA.	L	TOOL NO. TO ORDER	D DIA.	L	TOOL NO. TO ORDER	D DIA.	L
-832	A26-832	.38	.166	C2-8	.166	M2.5-8	.164	4.00	M3-8	.164	4.50	M4-8	.164	5.50			
-1024 -1032	A26-1032	.46	.191	C2-1032	.191	M2.5-1024 M2.5-1032	.189	4.10	M3-1024 M3-1032	.189	4.60	M4-1024 M4-1032	.189	5.60	M5-1024 M5-1032	.189	6.60
-420 -428	A26-428	.54	.250	C2-12	.250	M2.5-420 M2.5-12	.248	4.40	M3-420 M3-12	.248	4.85	M4-420 M4-12	.248	5.85	M5-420 M5-12	.248	6.85
-518 -524	A26-524	.65	.313	C2-14	.313	M2.5-518 M2.5-14	.310	4.50	M3-518 M3-14	.310	5.00	M4-518 M4-14	.310	6.00	M5-518 M5-14	.310	7.00
-616 -624	A26-624	.74	.375	C2-16	.375	M2.5-616 M2.5-16	.373	4.58	M3-616 M3-16	.373	5.05	M4-616 M4-16	.373	6.05	M5-616 M5-16	.373	7.05

Install these Blind Nut Part Numbers

HEAD STYLE: 100° Countersunk Shallow

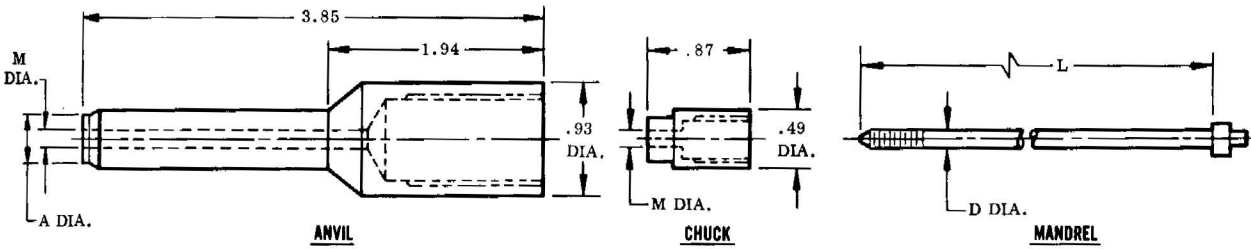
BN155	BN372P	BN518	BN528	BN553	BN564	BNB1105	BNB1111
BN157	BN377	BN521	BN532	BN556	BN565	BNB1105PB	BNB1112
BN158	BN388	BN525	BN535	BN556G	BNB1100	BNB1106	BNB1113
BN360	BN388L	BN525GA	BN536	BN557	BNB1101	BNB1107	BTN1
BN360PB	BN389	BN526	BN537	BN561	BNB1102	BNB1108	BTN1PB
BN360.64	BN516	BN526NL	BN537LK	BN562	BNB1103	BNB1109	BTN1G
BN372	BN516PB	BN527	BN543	BN563	BNB1104	BNB1110	

"B" STANDARD DRIVING TOOLS (1.85 long Anvil) for use with BG1750 GUN.



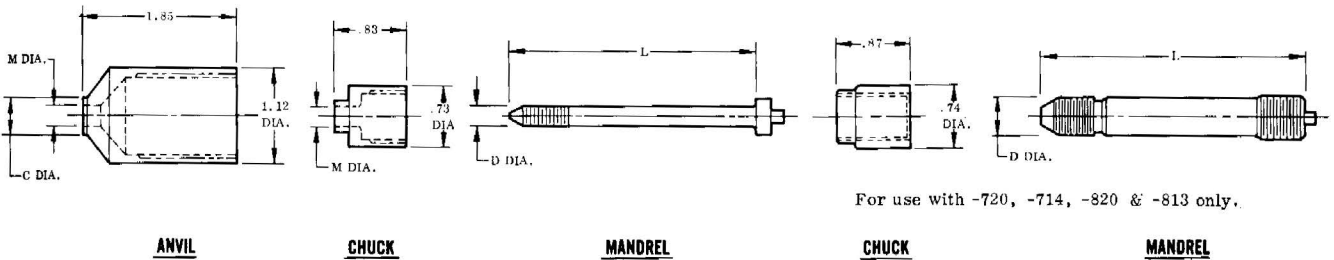
BLIND NUT FIRST DASH NO.	ANVIL ("B" Type)			CHUCK			MANDREL										
	TOOL NO. TO ORDER	C DIA.	M DIA.	TOOL NO. TO ORDER	M DIA.	MIN. GRIP-1/2" BLIND NUT GRIP RANGE			1/2"-1" BLIND NUT GRIP RANGE			1"-2" BLIND NUT GRIP RANGE			2"-3" BLIND NUT GRIP RANGE		
						TOOL NO. TO ORDER	D DIA.	L	TOOL NO. TO ORDER	D DIA.	L	TOOL NO. TO ORDER	D DIA.	L	TOOL NO. TO ORDER	D DIA.	L
-440	A17-440	.21	.113	C1-5	.113	M01-5	.111	1.80	M1-5	.111	2.30						
-632	A17-632	.26	.141	C1-632	.141	M01-632	.138	1.90	M1-632	.138	2.40						
-832	A17-832	.30	.166	C1-8	.166	M01-8	.164	2.00	M1-8	.164	2.50	M2-8	.164	3.50			
-1024 -1032	A17-1032	.35	.191	C1-1032	.191	M01-1024 M01-1032	.189	2.10	M1-1024 M1-1032	.189	2.60	M2-1024 M2-1032	.189	3.60	M3-1024 M3-1032	.189	4.60

"B" EXTENDED (Type "B" Anvil) for use with BG1750 GUN.



BLIND NUT FIRST DASH NO.	ANVIL ("B" Type)		CHUCK		MANDREL												
	TOOL NO. TO ORDER	A DIA.	M DIA.	TOOL NO. TO ORDER	M DIA.	MIN. GRIP—1/2" BLIND NUT GRIP RANGE			1/2"—1" BLIND NUT GRIP RANGE			1"—2" BLIND NUT GRIP RANGE			2"—3" BLIND NUT GRIP RANGE		
						TOOL NO. TO ORDER	D DIA.	L	TOOL NO. TO ORDER	D DIA.	L	TOOL NO. TO ORDER	D DIA.	L	TOOL NO. TO ORDER	D DIA.	L
-440	A18-440	.21	.113	C1-5	.113	M2.5-5	.111	3.80	M3-5	.111	4.30						
-632	A18-632	.26	.141	C1-632	.141	M2.5-632	.138	3.90	M3-632	.138	4.40						
-832	A18-832	.30	.166	C1-8	.166	M2.5-8	.164	4.00	M3-8	.164	4.50	M4-8	.164	5.50			
-1024	A18-1032	.35	.191	C1-1032	.191	M2.5-1024	.189	4.10	M3-1024	.189	4.60	M4-1024	.189	5.60	M5-1024	.189	6.60
-1032						M2.5-1032			M3-1032			M4-1032			M5-1032		

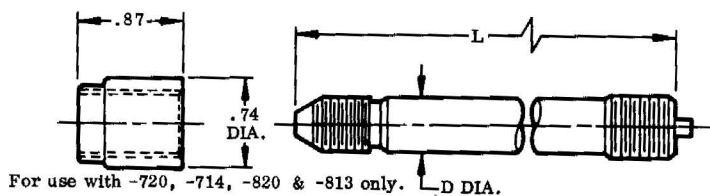
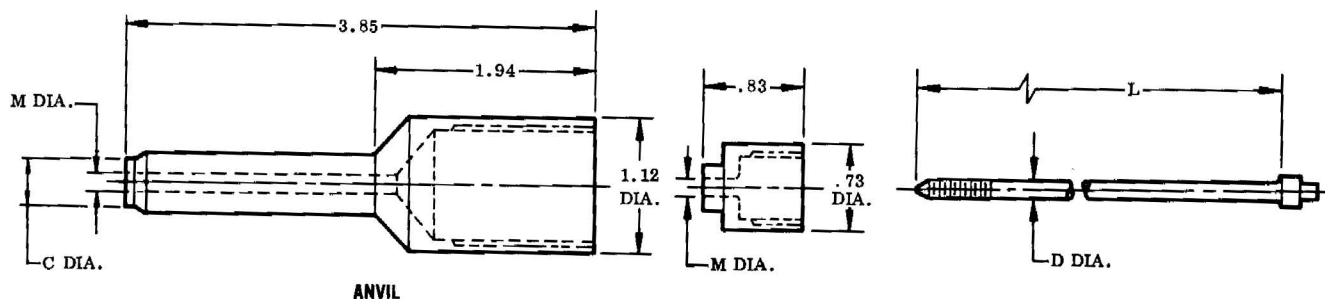
"B" STANDARD (Type "B" Anvil) for use with BG2500 GUN.



For use with -720, -714, -820 & -813 only.

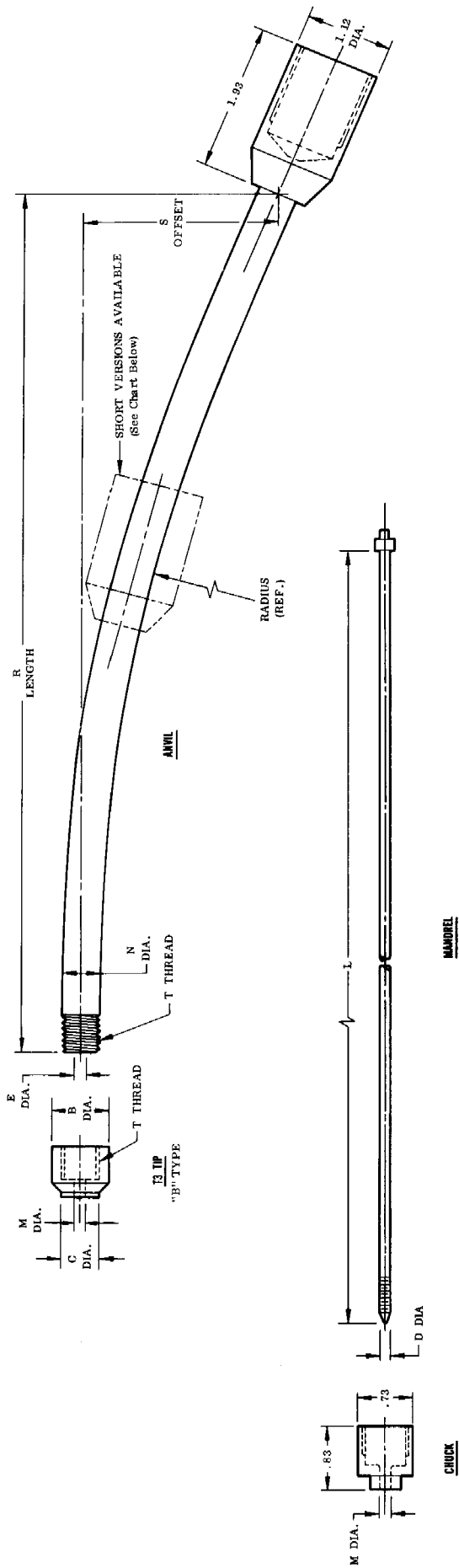
BLIND NUT FIRST DASH NO.	ANVIL ("B" Type)		CHUCK		MANDREL												
	TOOL NO. TO ORDER	C DIA.	M DIA.	TOOL NO. TO ORDER	M DIA.	MIN. GRIP—1/2" BLIND NUT GRIP RANGE			1/2"—1" BLIND NUT GRIP RANGE			1"—2" BLIND NUT GRIP RANGE			2"—3" BLIND NUT GRIP RANGE		
						TOOL NO. TO ORDER	D DIA.	L	TOOL NO. TO ORDER	D DIA.	L	TOOL NO. TO ORDER	D DIA.	L	TOOL NO. TO ORDER	D DIA.	L
-440	A27-440	.21	.113	C2-5	.113	M01-5	.111	1.80	M1-5	.111	2.30						
-632	A27-632	.26	.141	C2-632	.141	M01-632	.139	1.90	M1-632	.139	2.40						
-832	A27-832	.30	.166	C2-8	.166	M01-8	.164	2.00	M1-8	.164	2.50	M2-8	.164	3.50			
-1024	A27-1032	.35	.191	C2-1032	.191	M01-1024	.189	2.10	M1-1024	.189	2.60	M2-1024	.189	3.60	M3-1024	.189	4.60
-1032						M01-1032			M1-1032			M2-1032			M3-1032		
-428	A27-428	.43	.250	C2-12	.250	M01-12	.248	2.40	M1-12	.248	2.85	M2-12	.248	3.85	M3-12	.248	4.85
-420						M01-420			M1-420			M2-420			M3-420		
-524	A27-524	.51	.313	C2-14	.313	M01-14	.310	2.50	M1-14	.310	3.00	M2-14	.310	4.00	M3-14	.310	5.00
-518						M01-518			M1-518			M2-518			M3-518		
-624	A27-624	.57	.375	C2-16	.375	M01-16	.373	2.58	M1-16	.373	3.05	M2-16	.373	4.05	M3-16	.373	5.05
-616						M01-616			M1-616			M2-616			M3-616		
-720	A27-720	.63	.438	C3		M01-720	.435	2.60	M1-720	.435	3.10	M2-720	.435	4.10	M3-720	.435	5.10
-714						M01-714			M1-714			M2-714			M3-714		
-820	A27-820	.69	.500	C3		M01-820	.498	2.70	M1-820	.498	3.20	M2-820	.498	4.20	M3-820	.498	5.20
-813						M01-813			M1-813			M2-813			M3-813		

"B" EXTENDED DRIVING TOOLS (3.85 long Anvil) for use with BG2500 GUN.



BLIND NUT FIRST DASH NO.	ANVIL ("B" Type)		CHUCK		MANDREL												
	TOOL NO. TO ORDER	C DIA.	M DIA.	TOOL NO. TO ORDER	M DIA.	MIN. GRIP-1/2" BLIND NUT GRIP RANGE			1/2"-1" BLIND NUT GRIP RANGE			1"-2" BLIND NUT GRIP RANGE			2"-3" BLIND NUT GRIP RANGE		
						TOOL NO. TO ORDER	D DIA.	L	TOOL NO. TO ORDER	D DIA.	L	TOOL NO. TO ORDER	D DIA.	L	TOOL NO. TO ORDER	D DIA.	L
-440	A28-440	.21	.113	C2-5	.113	M2.5-5	.111	3.80	M3-5	.111	4.30						
-632	A28-632	.26	.141	C2-632	.141	M2.5-632	.138	3.90	M3-632	.138	4.40						
-832	A28-832	.30	.166	C2-8	.166	M2.5-8	.164	4.00	M3-8	.164	4.50	M4-8	.164	5.50			
-1024	A28-1032	.35	.193	C2-1032	.191	M2.5-1024	.189	4.10	M3-1024	.189	4.60	M4-1024	.189	5.60	M5-1024	.189	6.60
-1032						M2.5-1032			M3-1032			M4-1032			M5-1032		
-428	A28-428	.43	.261	C2-12	.250	M2.5-12	.248	4.40	M3-12	.248	4.85	M4-12	.248	5.85	M5-12	.248	6.85
-420						M2.5-420			M3-420			M4-420			M5-420		
-524	A28-524	.51	.313	C2-14	.313	M2.5-14	.310	4.50	M3-14	.310	5.00	M4-14	.310	6.00	M5-14	.310	7.00
-518						M2.5-518			M3-518			M4-518			M5-518		
-624	A28-624	.57	.385	C2-16	.375	M2.5-16	.373	4.58	M3-16	.373	5.05	M4-16	.373	6.05	M5-16	.373	7.05
-616						M2.5-616			M3-616			M4-616			M5-616		
-720	A28-720	.63	.448	C3		M2.5-720	.435	4.70	M3-720	.435	5.10	M4-720	.435	6.10	M5-720	.435	7.10
-714						M2.5-714			M3-714			M4-714			M5-714		
-820	A28-820	.69	.511	C3		M2.5-820	.498	4.80	M3-820	.498	5.20	M4-820	.498	6.20	M5-820	.498	7.20
-813						M2.5-813			M3-813			M4-813			M5-813		

"B" OFFSET DRIVING TOOLS for use with BG2500 GUN.



BLIND NUT FIRST DASH NO.	ANVIL							TIP - ("B" Type)					BG2500 CHUCK		MANDREL					
	PART NO.	E DIA.	N DIA.	R LENGTH	S OFFSET	T THREAD	RADIUS REF.	PART NO.	C DIA.	B DIA.	M DIA.	T THREAD	PART NO.	M DIA.	0-1" GRIP RANGE PART NO.	D DIA.	LENGTH	1"-2" GRIP RANGE PART NO.	D DIA.	LENGTH
-440	A211-1	.19	.50	10.0	2.50	1/2-20	18.0	T3-440	.21	.750	.113	1/2-20	C2-5	.113	M6-5	.111	13.0	-	-	-
	A211-5			5.2	.75			T3-440					C2-5		M8-5		8.0	-	-	-
-632	A211-1	.19	.50	10.0	2.50	1/2-20	18.0	T3-632	.26	.750	.141	1/2-20	C2-632	.141	M6-632	.138	13.0	-	-	-
	A211-5			5.2	.75			T3-632					C2-632		M8-632		8.0	-	-	-
-832	A211-2	.23	.50	11.5	2.00	1/2-20	29.0	T3-832	.30	.750	.166	1/2-20	C2-8	.166	M6-8	.164	14.5	M7-8	.164	15.5
	A211-6			6.2	.72			T3-832					C2-8		M8-8		9.5	-	-	-
-1024	A211-2	.23	.50	11.5	2.00	1/2-20	29.0	T3-1032	.35	.750	.191	1/2-20	C2-1032	.191	M6-1024	.189	14.5	M7-1024	.189	15.5
	A211-6			6.2	.72			T3-1032					C2-1032		M8-1024		9.5	-	-	-
-1032	A211-2	.23	.50	11.5	2.00	1/2-20	29.0	T3-1032	.35	.750	.191	1/2-20	C2-1032	.191	M6-1032	.189	14.5	M7-1032	.189	15.5
	A211-6			6.2	.72			T3-1032					C2-1032		M8-1032		9.5	-	-	-
-420	A211-3	.31	.62	11.2	1.80	5/8-18	32.0	T3-428	.43	.837	.250	5/8-18	C2-12	.250	M6-420	.248	14.5	M7-420	.248	15.5
	A211-7			6.0	.62			T3-428					C2-12		M8-420		9.5	-	-	-
-428	A211-3	.31	.62	11.2	1.80	5/8-18	32.0	T3-428	.43	.837	.250	5/8-18	C2-12	.250	M6-12	.248	14.5	M7-12	.248	15.5
	A211-7			6.0	.62			T3-428					C2-12		M8-12		9.5	-	-	-

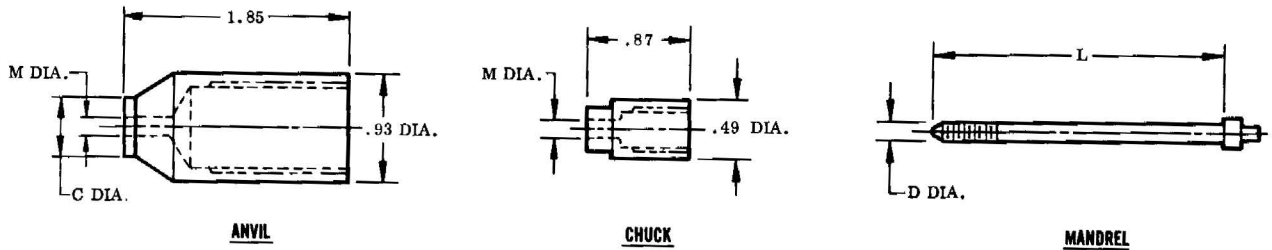
*Note: The above driving tools (for Blind Nut sizes 4-40 thru -1024 and -1032) can be used with the BG1750 Gun when the latter is converted with the A41 Anvil Adaptor and C1 series Chuck.

Install these Blind Nut Part Numbers

HEAD STYLE: Protruding

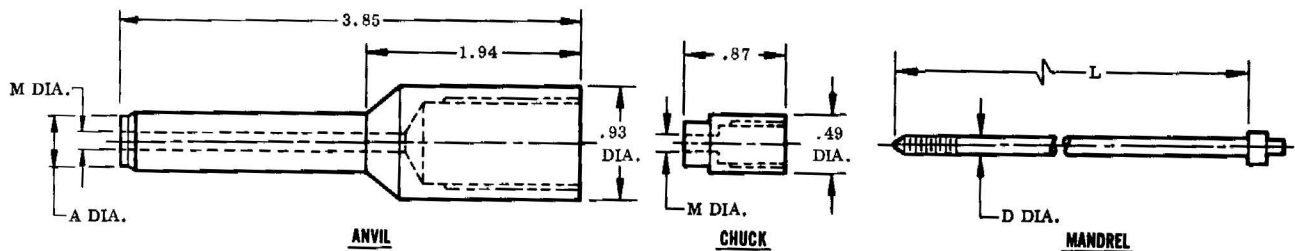
BN356G BN519LH BN530 BN533 BN540 BN542
 BN356PB BN523 BN530G BN533G BN540PB BN549

"C" STANDARD DRIVING TOOLS (1.85 long Anvil) for use with BG1750 GUN.



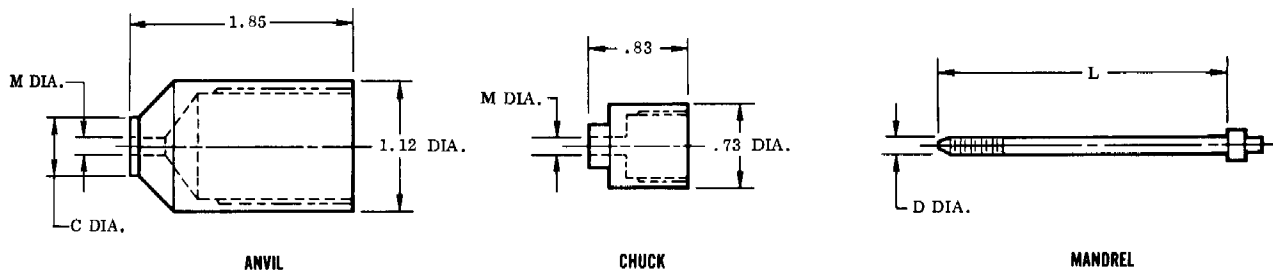
BLIND NUT FIRST DASH NO.	ANVIL ("C" Type)			CHUCK		MANDREL											
	TOOL NO. TO ORDER	C DIA.	M DIA.	TOOL NO. TO ORDER	M DIA.	MIN. GRIP-1/2" BLIND NUT GRIP RANGE			1/2"-1" BLIND NUT GRIP RANGE			1"-2" BLIND NUT GRIP RANGE			2"-3" BLIND NUT GRIP RANGE		
						TOOL NO. TO ORDER	D DIA.	L	TOOL NO. TO ORDER	D DIA.	L	TOOL NO. TO ORDER	D DIA.	L	TOOL NO. TO ORDER	D DIA.	L
-440	A33-440	.29	.113	C1-5	.113	M01-5	.111	1.80	M1-5	.111	2.30						
-632	A33-632	.31	.141	C1-632	.141	M01-632	.138	1.90	M1-632	.138	2.40						
-832	A33-832	.41	.166	C1-8	.166	M01-8	.164	2.00	M1-8	.164	2.50	M2-8	.164	3.50			
-1024 -1032	A33-1032	.50	.191	C1-1032	.191	M01-1024 M01-1032	.189	2.10	M1-1024 M1-1032	.189	2.60	M2-1024 M2-1032	.189	3.60	M3-1024 M3-1032	.189	4.60

"C" EXTENDED DRIVING TOOLS (3.85 long Anvil) for use with BG1750 GUN.



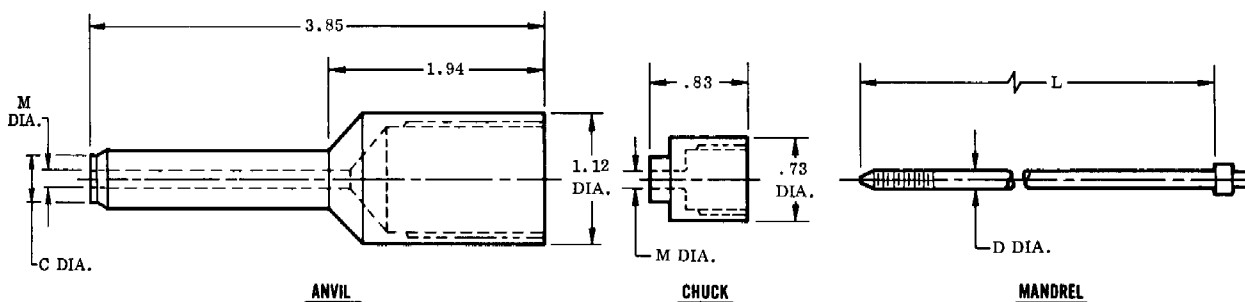
BLIND NUT FIRST DASH NO.	ANVIL ("C" Type)			CHUCK		MANDREL											
	TOOL NO. TO ORDER	A DIA.	M DIA.	TOOL NO. TO ORDER	M DIA.	MIN. GRIP-1/2" BLIND NUT GRIP RANGE			1/2"-1" BLIND NUT GRIP RANGE			1"-2" BLIND NUT GRIP RANGE			2"-3" BLIND NUT GRIP RANGE		
						TOOL NO. TO ORDER	D DIA.	L	TOOL NO. TO ORDER	D DIA.	L	TOOL NO. TO ORDER	D DIA.	L	TOOL NO. TO ORDER	D DIA.	L
-440	A35-440	.29	.113	C1-5	.113	M2.5-5	.111	3.80	M3-5	.111	4.30						
-632	A35-632	.31	.141	C1-632	.141	M2.5-632	.138	3.90	M3-632	.138	4.40						
-832	A35-832	.41	.166	C1-8	.166	M2.5-1032	.164	4.00	M3-8	.164	4.50	M4-8	.164	5.50			
-1024 -1032	A35-1032	.50	.191	C1-1032	.191	M2.5-1024 M2.5-1032	.189	4.10	M3-1024 M3-1032	.189	4.60	M4-1024 M4-1032	.189	5.60	M5-1024 M5-1032	.189	6.60

"C" STANDARD DRIVING TOOLS (1.85 long Anvil) for use with BG2500 GUN.



BLIND NUT FIRST DASH NO.	ANVIL ("C" Type)		CHUCK		MANDREL														
	TOOL NO. TO ORDER	C DIA.	M DIA.	TOOL NO. TO ORDER	M DIA.	MIN. GRIP-1/2" BLIND NUT GRIP RANGE			1/2"-1" BLIND NUT GRIP RANGE			1"-2" BLIND NUT GRIP RANGE			2"-3" BLIND NUT GRIP RANGE				
						TOOL NO. TO ORDER	D DIA.	L	TOOL NO. TO ORDER	D DIA.	L	TOOL NO. TO ORDER	D DIA.	L	TOOL NO. TO ORDER	D DIA.	L		
-440	A32-440	.29	.113	C2-5	.113	M01-5	.111	1.80	M1-5	.111	2.30								
-632	A32-632	.31	.141	C2-632	.141	M01-632	.139	1.90	M1-632	.139	2.40								
-832	A32-832	.41	.166	C2-8	.166	M01-8	.164	2.00	M1-8	.164	2.50	M2-8	.164	3.50					
-1024	A32-1032	.50	.191	C2-1032	.191	M01-1024	.189	2.10	M1-1024	.189	2.60	M2-1024	.189	3.60	M3-1024	.189	4.60		
-1032						M01-1032			M1-1032			M2-1032			M3-1032				
-420	A32-428	.61	.250	C2-12	.250	M01-420	.248	2.40	M1-420	.248	2.85	M2-420	.248	3.85	M3-420	.248	4.85		
-428						M01-12			M1-12			M2-12			M3-12				
-518	A32-524	.80	.313	C2-14	.313	M01-518	.310	2.50	M1-518	.310	3.00	M2-518	.310	4.00	M3-518	.310	5.00		
-524						M01-14			M1-14			M2-14			M3-14				
-616	A32-624	.89	.375	C2-16	.375	M01-616	.373	2.58	M1-616	.373	3.05	M2-616	.373	4.05	M3-616	.373	5.05		
-624						M01-16			M1-16			M2-16			M3-16				

"C" EXTENDED DRIVING TOOLS (3.85 long Anvil) for use with BG2500 GUN.



BLIND NUT FIRST DASH NO.	ANVIL ("C" Type)		CHUCK		MANDREL														
	TOOL NO. TO ORDER	C DIA.	M DIA.	TOOL NO. TO ORDER	M DIA.	MIN. GRIP-1/2" BLIND NUT GRIP RANGE			1/2"-1" BLIND NUT GRIP RANGE			1"-2" BLIND NUT GRIP RANGE			2"-3" BLIND NUT GRIP RANGE				
						TOOL NO. TO ORDER	D DIA.	L	TOOL NO. TO ORDER	D DIA.	L	TOOL NO. TO ORDER	D DIA.	L	TOOL NO. TO ORDER	D DIA.	L		
-440	A34-440	.29	.113	C1-5	.113	M2.5-5	.111	3.80	M3-5	.111	4.30								
-632	A34-632	.31	.141	C1-632	.141	M2.5-632	.139	3.90	M3-632	.139	4.40								
-832	A34-832	.41	.166	C2-8	.166	M2.5-8	.164	4.00	M3-8	.164	4.50	M4-8	.164	5.50					
-1024	A34-1032	.49	.193	C2-1032	.191	M2.5-1024	.189	4.10	M3-1024	.189	4.60	M4-1024	.189	5.60	M5-1024	.189	6.60		
-1032						M2.5-1032			M3-1032			M4-1032			M5-1032				
-420	A34-428	.60	.250	C2-12	.250	M2.5-420	.248	4.40	M3-420	.248	4.85	M4-420	.248	5.85	M5-420	.248	6.85		
-428						M2.5-12			M3-12			M4-12			M5-12				
-518	A34-524	.79	.313	C2-14	.313	M2.5-518	.310	4.50	M3-518	.310	5.00	M4-518	.310	6.00	M5-518	.310	7.00		
-524						M2.5-14			M3-14			M4-14			M5-14				
-616	A34-624	.89	.375	C2-16	.375	M2.5-616	.373	4.58	M3-616	.373	5.05	M4-616	.373	6.05	M5-616	.373	7.05		
-624						M2.5-16			M3-16			M4-16			M5-16				

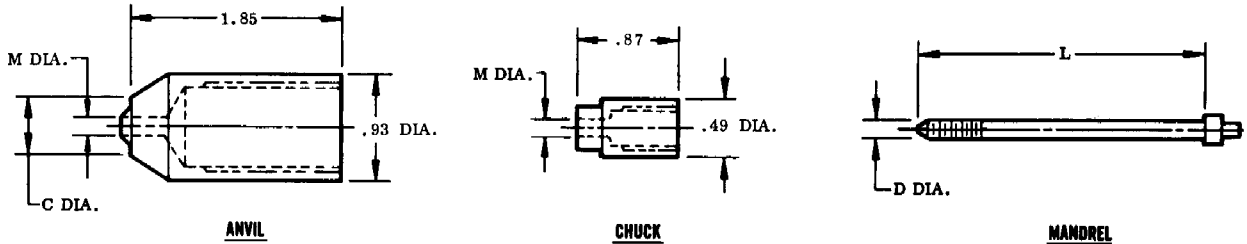
Install these Blind Bolt Part Numbers

HEAD STYLE: 100° Countersunk, MS24694 or AN509 Head

HEAD STYLE: Protruding Head

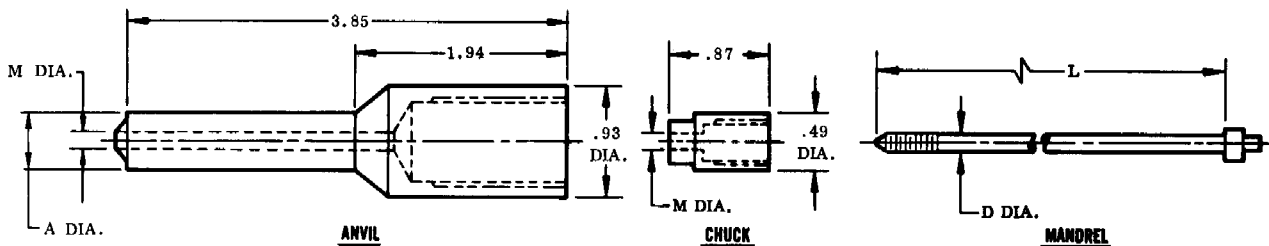
BB351	BB351.64G	BB352.32P	BB365	BB428
BB351G	BB351.64P	BB352.32PB	BB366	BB428G
BB351P	BB351.64PB	BB352.64	BB370	BB428P
BB351PB	BB352	BB352.64G	BB379	BB428PB
BB351.32	BB352G	BB352.64P	BB380	BB430
BB351.32G	BB352P	BB352.64PB	BB386	BB430G
BB351.32P	BB352PB	BB354	BB391	BB445
BB351.32PB	BB352.32	BB362	BB399	BB515G
BB351.64	BB352.32G	BB363	BB402	

"J" STANDARD DRIVING TOOLS (1.85 long Anvil) for use with BG1750 GUN.



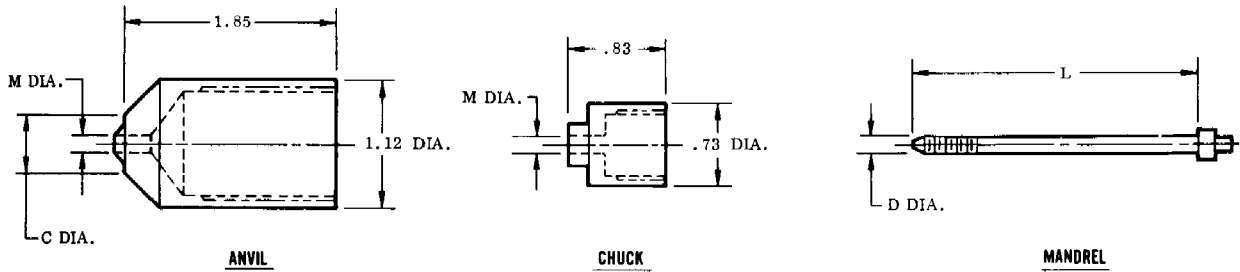
BLIND BOLT FIRST DASH NO.	ANVIL ("J" Type)		CHUCK		MANDREL												
	TOOL NO. TO ORDER	C DIA.	M DIA.	TOOL NO. TO ORDER	M DIA.	MIN. GRIP-1/2" BLIND BOLT GRIP RANGE			1/2"-1" BLIND BOLT GRIP RANGE			1"-2" BLIND BOLT GRIP RANGE			2"-3" BLIND BOLT GRIP RANGE		
						TOOL NO. TO ORDER	D DIA.	L	TOOL NO. TO ORDER	D DIA.	L	TOOL NO. TO ORDER	D DIA.	L	TOOL NO. TO ORDER	D DIA.	L
-5	A11-5	.32	.113	C1-5	.113	M01-5	.111	1.80	M1-5	.111	2.30						
-6	A11-6	.37	.125	C1-6	.125	M01-6	.123	1.90	M1-6	.123	2.40						
-8	A11-8	.50	.166	C1-8	.166	M01-8	.164	2.00	M1-8	.164	2.50	M2-8	.164	3.50			
-10	A11-10	.62	.219	C1-10	.219	M01-10	.217	2.20	M1-10	.217	2.70	M2-10	.217	3.70	M3-10	.217	4.70

"J" EXTENDED DRIVING TOOLS (3.85 long Anvil) for use with BG1750 GUN.



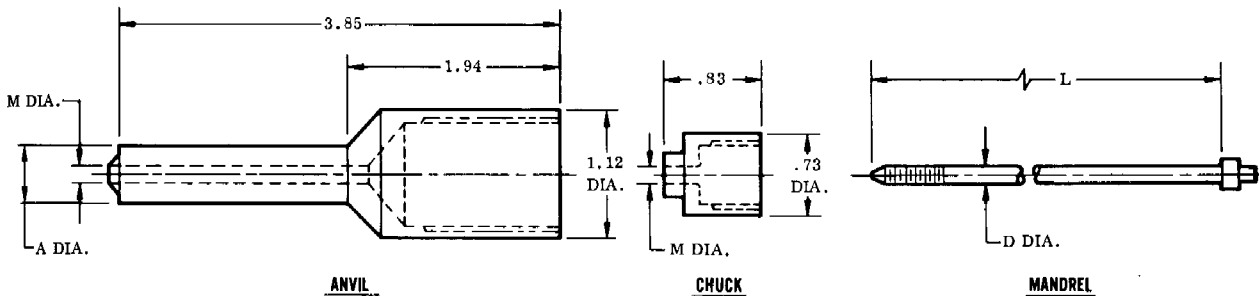
BLIND BOLT FIRST DASH NO.	ANVIL ("J" Type)		CHUCK		MANDREL												
	TOOL NO. TO ORDER	A DIA.	M DIA.	TOOL NO. TO ORDER	M DIA.	MIN. GRIP-1/2" BLIND BOLT GRIP RANGE			1/2"-1" BLIND BOLT GRIP RANGE			1"-2" BLIND BOLT GRIP RANGE			2"-3" BLIND BOLT GRIP RANGE		
						TOOL NO. TO ORDER	D DIA.	L	TOOL NO. TO ORDER	D DIA.	L	TOOL NO. TO ORDER	D DIA.	L	TOOL NO. TO ORDER	D DIA.	L
-5	A12-5	.32	.113	C1-5	.113	M2.5-5	.111	3.80	M3-5	.111	4.30						
-6	A12-6	.37	.125	C1-6	.125	M2.5-6	.123	3.90	M3-6	.123	4.40						
-8	A12-8	.49	.166	C1-8	.166	M2.5-8	.164	4.00	M3-8	.164	4.50	M4-8	.164	5.50			
-10	A12-10	.62	.219	C1-10	.219	M2.5-10	.217	4.20	M3-10	.217	4.70	M4-10	.217	5.70	M5-10	.217	6.70

"J" STANDARD DRIVING TOOLS (1.85 long Anvil) for use with BG2500 GUN.



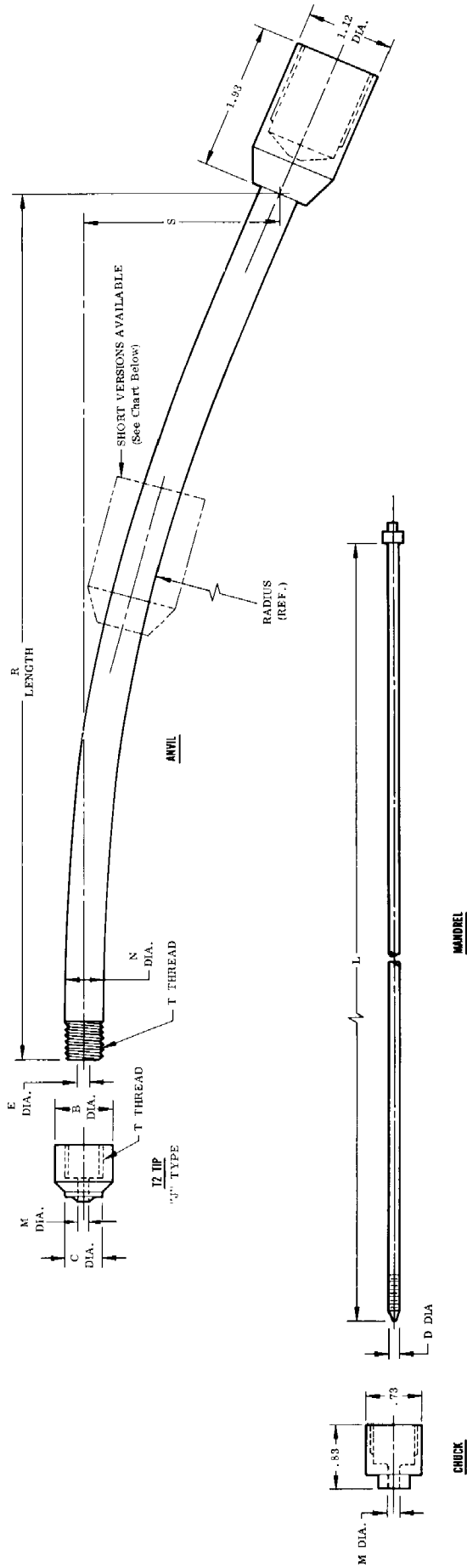
BLIND BOLT FIRST DASH NO.	ANVIL ("J" Type)				CHUCK		MANDREL											
	TOOL NO. TO ORDER	C DIA.	M DIA.	TOOL NO. TO ORDER	M DIA.	MIN. GRIP-1/2" BLIND BOLT GRIP RANGE			1/2"-1" BLIND BOLT GRIP RANGE			1"-2" BLIND BOLT GRIP RANGE			2"-3" BLIND BOLT GRIP RANGE			
						TOOL NO. TO ORDER	D DIA.	L	TOOL NO. TO ORDER	D DIA.	L	TOOL NO. TO ORDER	D DIA.	L	TOOL NO. TO ORDER	D DIA.	L	
-5	A21-5	.32	.113	C2-5	.113	M01-5	.111	1.80	M1-5	.111	2.30							
-6	A21-6	.37	.125	C2-6	.125	M01-6	.123	1.90	M1-6	.123	2.40							
-8	A21-8	.50	.166	C2-8	.166	M01-8	.164	2.00	M1-8	.164	2.50	M2-8	.164	3.50				
-10	A21-10	.62	.219	C2-10	.219	M01-10	.217	2.20	M1-10	.217	2.70	M2-10	.217	3.70	M3-10	.217	4.70	
-12	A21-12	.75	.250	C2-12	.250	M01-12	.248	2.40	M1-12	.248	2.85	M2-12	.248	3.85	M3-12	.248	4.85	
-14	A21-14	.88	.313	C2-14	.313	M01-14	.310	2.50	M1-14	.310	3.00	M2-14	.310	4.00	M3-14	.310	5.00	
-16	A21-16	1.00	.375	C2-16	.375	M01-16	.373	2.58	M1-16	.373	3.05	M2-16	.373	4.05	M3-16	.373	5.05	

"J" EXTENDED DRIVING TOOLS (3.85 long Anvil) for use with BG2500 GUN.



BLIND BOLT FIRST DASH NO.	ANVIL ("J" Type)				CHUCK		MANDREL											
	TOOL NO. TO ORDER	A DIA.	M DIA.	TOOL NO. TO ORDER	M DIA.	MIN. GRIP-1/2" BLIND BOLT GRIP RANGE			1/2"-1" BLIND BOLT GRIP RANGE			1"-2" BLIND BOLT GRIP RANGE			2"-3" BLIND BOLT GRIP RANGE			
						TOOL NO. TO ORDER	D DIA.	L	TOOL NO. TO ORDER	D DIA.	L	TOOL NO. TO ORDER	D DIA.	L	TOOL NO. TO ORDER	D DIA.	L	
-5	A22-5	.32	.113	C2-5	.113	M2.5-5	.111	3.80	M3-5	.111	4.30							
-6	A22-6	.37	.125	C2-6	.125	M2.5-6	.123	3.90	M3-6	.123	4.40							
-8	A22-8	.49	.166	C2-8	.166	M2.5-8	.164	4.00	M3-8	.164	4.50	M4-8	.164	5.50				
-10	A22-10	.62	.219	C2-10	.219	M2.5-10	.217	4.20	M3-10	.217	4.70	M4-10	.217	5.70	M5-10	.217	6.70	
-12	A22-12	.75	.250	C2-12	.250	M2.5-12	.248	4.40	M3-12	.248	4.85	M4-12	.248	5.85	M5-12	.248	6.85	
-14	A22-14	.88	.313	C2-14	.313	M2.5-14	.310	4.50	M3-14	.310	5.00	M4-14	.310	6.00	M5-14	.310	7.00	
-16	A22-16	1.00	.375	C2-16	.375	M2.5-16	.373	4.55	M3-16	.373	5.05	M4-16	.373	6.05	M5-16	.373	7.05	

"J" OFFSET DRIVING TOOLS for use with BG2500 GUN.



BLIND BOLT FIRST DASH NO.	ANVIL					TIP - ("J" Type)			CHUCK		0-1" GRIP		1"-2" GRIP					
	PART NO.	E DIA.	N DIA.	R LENGTH	S OFFSET	T THREAD	PART NO.	C DIA.	B DIA.	M DIA.	T THREAD	PART NO.	M DIA.	D DIA.	LENGTH	PART NO.	D DIA.	LENGTH
-5	A211-1	.19	.50	10.0	2.50	1/2-20	T2-5	.32	.750	.113	1/2-20	C2-5	.113	.111	13.0	—	—	—
	A211-5	.19	.50	5.2	.75	1/2-20	T2-5	.32	.750	.113	1/2-20	C2-5	.113	.111	8.0	—	—	—
-6	A211-1	.19	.50	10.0	2.50	1/2-20	T2-6	.37	.750	.125	1/2-20	C2-6	.125	.123	13.0	—	—	—
	A211-5	.19	.50	5.2	.75	1/2-20	T2-6	.37	.750	.125	1/2-20	C2-6	.125	.123	8.0	—	—	—
-8	A211-2	.23	.50	11.5	2.00	1/2-20	T2-8	.50	.750	.166	1/2-20	C2-8	.166	.164	14.5	M7-8	.164	15.5
	A211-6	.23	.50	6.2	.72	1/2-20	T2-8	.50	.750	.166	1/2-20	C2-8	.166	.164	9.5	—	—	—
-10	A211-2	.23	.50	11.5	2.00	1/2-20	T2-10	.62	.750	.219	1/2-20	C2-10	.219	.217	14.5	M7-10	.217	15.5
	A211-6	.23	.50	6.2	.72	1/2-20	T2-10	.62	.750	.219	1/2-20	C2-10	.219	.217	9.5	—	—	—
-12	A211-3	.31	.62	11.2	1.80	5/8-20	T2-12	.75	.837	.250	5/8-20	C2-12	.250	.248	14.5	M7-12	.248	15.5
	A211-7	.31	.62	6.0	.62	5/8-20	T2-12	.75	.837	.250	5/8-20	C2-12	.250	.248	9.5	—	—	—

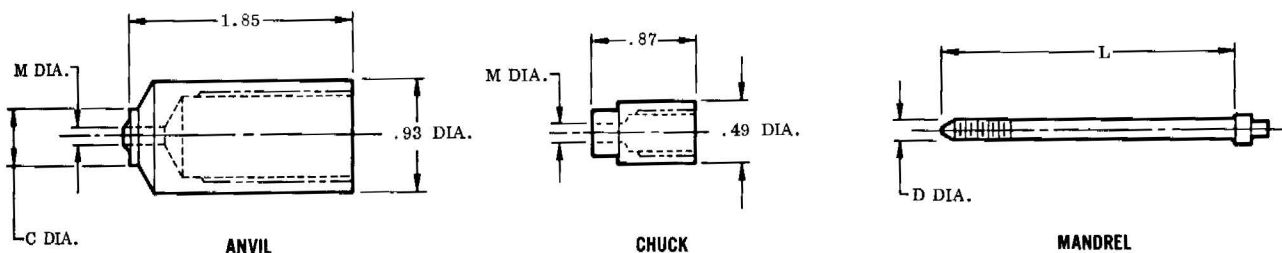
*Note: The above offset driving tools (for Blind Bolt sizes -5 thru -10) can be used with the BG1750 Gun when the latter is converted with the AA1 Anvil Adaptor and C1 series Chuck.

Install these Blind Bolt Part Numbers

HEAD STYLE: 100° Countersunk, MS20426 or AN426 Head

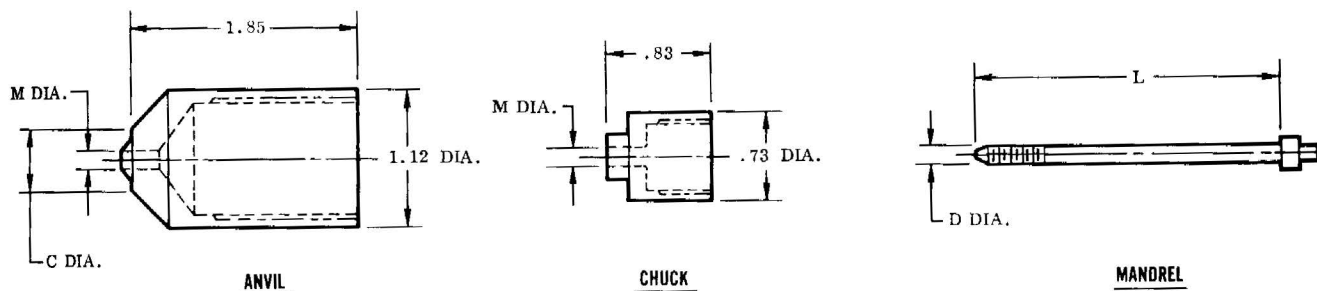
BB368 BB371 BB382 BB436
BB369 BB381 BB432 BB517

"K" STANDARD DIVING TOOLS (1.85 long Anvil) for use with BG1750 GUN.



BLIND BOLT FIRST DASH NO.	ANVIL ("K" Type)			CHUCK		MANDREL								
	TOOL NO. TO ORDER	C DIA.	M DIA.	TOOL NO. TO ORDER	M DIA.	MIN. GRIP-1/2" BLIND BOLT GRIP RANGE			1/2"-1" BLIND BOLT GRIP RANGE			1"-2" BLIND BOLT GRIP RANGE		
						TOOL NO. TO ORDER	D DIA.	L	TOOL NO. TO ORDER	D DIA.	L	TOOL NO. TO ORDER	D DIA.	L
-5	A19-5	.27	.113	C1-5	.113	M01-5	.111	1.80	M1-5	.111	2.30			
-6	A19-6	.34	.125	C1-6	.125	M01-6	.123	1.90	M1-6	.123	2.40			
-8	A19-8	.46	.166	C1-8	.166	M01-8	.164	2.00	M1-8	.164	2.50	M2-8	.164	3.50
-10	A19-10	.55	.219	C1-10	.215	M01-10	.217	2.20	M1-10	.217	2.70	M2-10	.217	3.70

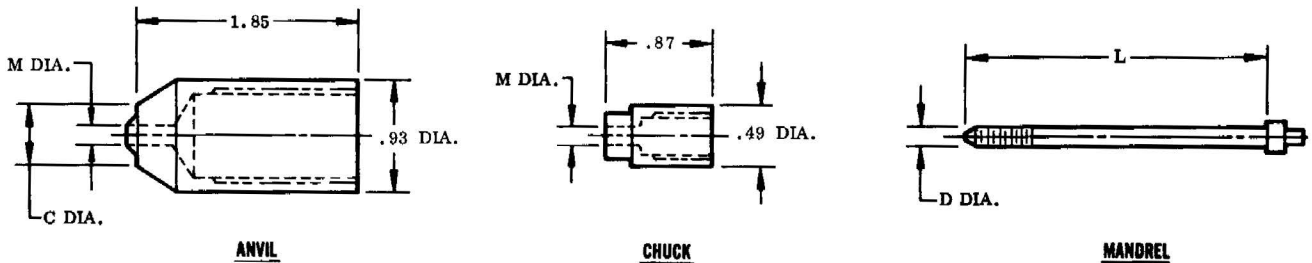
"K" STANDARD DIVING TOOLS (1.85 long Anvil) for use with BG2500 GUN.



BLIND BOLT FIRST DASH NO.	ANVIL ("K" Type)			CHUCK		MANDREL								
	TOOL NO. TO ORDER	C DIA.	M DIA.	TOOL NO. TO ORDER	M DIA.	MIN. GRIP-1/2" BLIND BOLT GRIP RANGE			1/2"-1" BLIND BOLT GRIP RANGE			1"-2" BLIND BOLT GRIP RANGE		
						TOOL NO. TO ORDER	D DIA.	L	TOOL NO. TO ORDER	D DIA.	L	TOOL NO. TO ORDER	D DIA.	L
-5	A21-5A	.27	.113	C2-5	.113	M01-5	.111	1.80	M1-5	.111	2.30			
-6	A21-6A	.34	.125	C2-6	.125	M01-6	.123	1.90	M1-6	.123	2.40			
-8	A21-8A	.46	.166	C2-8	.166	M01-8	.164	2.00	M1-8	.164	2.50	M2-8	.164	3.50
-10	A21-10A	.55	.219	C2-10	.215	M01-10	.217	2.20	M1-10	.217	2.70	M2-10	.217	3.70

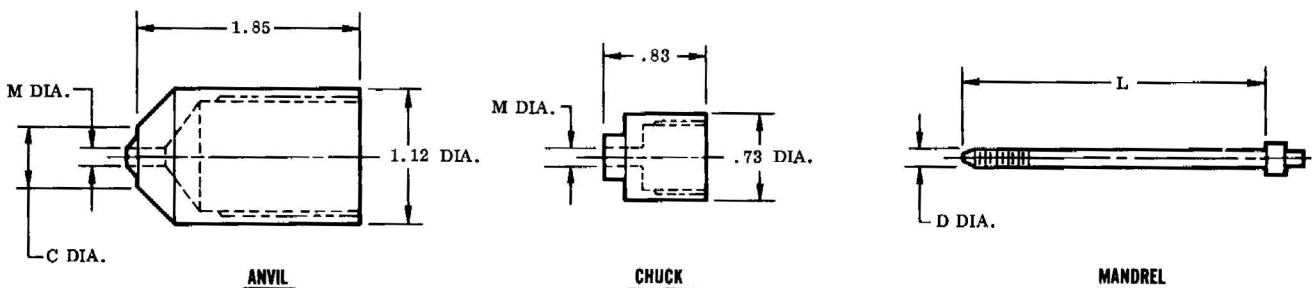
BB437 BB449 BB518
 BB441 BB450

"L" STANDARD DRIVING TOOLS (1.85 long Anvil) for use with BG1750 GUN.



BLIND BOLT FIRST DASH NO.	ANVIL ("L" Type)			CHUCK		MANDREL					
	TOOL NO. TO ORDER	C DIA.	M DIA.	TOOL NO. TO ORDER	M DIA.	MIN.-1/2" GRIP			1/2"-1" GRIP		
						TOOL NO. TO ORDER	D DIA.	L DIA.	TOOL NO. TO ORDER	D DIA.	L DIA.
-5	A45-5	.25	.113	C1-5	.113	M01-5	.111	1.80	M1-5	.111	2.30
-6	A45-6	.29	.125	C1-6	.125	M01-6	.123	1.90	M1-6	.123	2.40
-8	A45-8	.38	.166	C1-8	.166	M01-8	.164	2.00	M1-8	.164	2.50

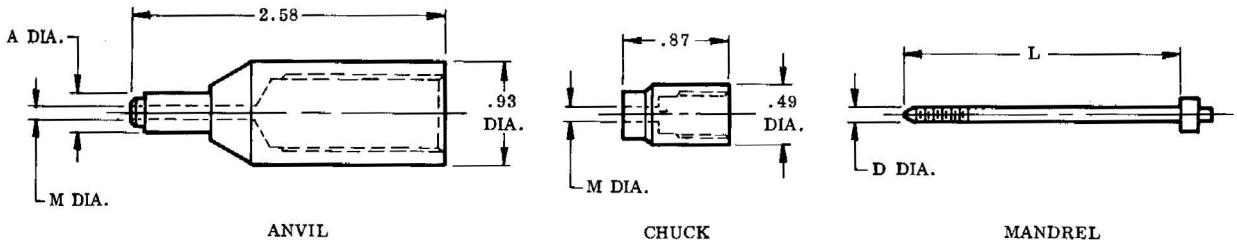
"L" STANDARD DRIVING TOOLS (1.85 long Anvil) for use with BG2500 GUN.



BLIND BOLT FIRST DASH NO.	ANVIL ("L" Type)			CHUCK		MANDREL					
	TOOL NO. TO ORDER	C DIA.	M DIA.	TOOL NO. TO ORDER	M DIA.	MIN.-1/2" GRIP			1/2"-1" GRIP		
						TOOL NO. TO ORDER	D DIA.	L DIA.	TOOL NO. TO ORDER	D DIA.	L DIA.
-5	A46-5	.25	.113	C2-5	.113	M01-5	.111	1.80	M1-5	.111	2.30
-6	A46-6	.29	.125	C2-6	.125	M01-6	.123	1.90	M1-6	.123	2.40
-8	A46-8	.38	.166	C2-8	.166	M01-8	.164	2.00	M1-8	.164	2.50

Note: In addition to the tools listed below, a standard flat-faced rivet set is needed to crimp the head of the installed fastener. For Further information on tooling and installation procedure, request brochure 2-109922.

"M" STANDARD DRIVING TOOLS for use with BG1750 GUN.



BLIND BOLT FIRST DASH NO.	ANVIL ("L" Type)			CHUCK		MANDREL			CORE BOLT DRIVER RECESS (REF.)	PUNCH	
	TOOL NO. TO ORDER	A DIA.	M DIA.	TOOL NO. TO ORDER	M DIA.	TOOL NO. TO ORDER	D DIA.	L		.498 SHANK	.401 SHANK
-5	A43-5	.32	.113	C1-5	.113	M1-5	.111	2.30	Phillips #1	BBP1-5	BBP2-5

ADDITIONAL INSTALLATION PROCEDURE REQUIRED FOR RETAINING CORE BOLT STYLE BLIND BOLTS.

